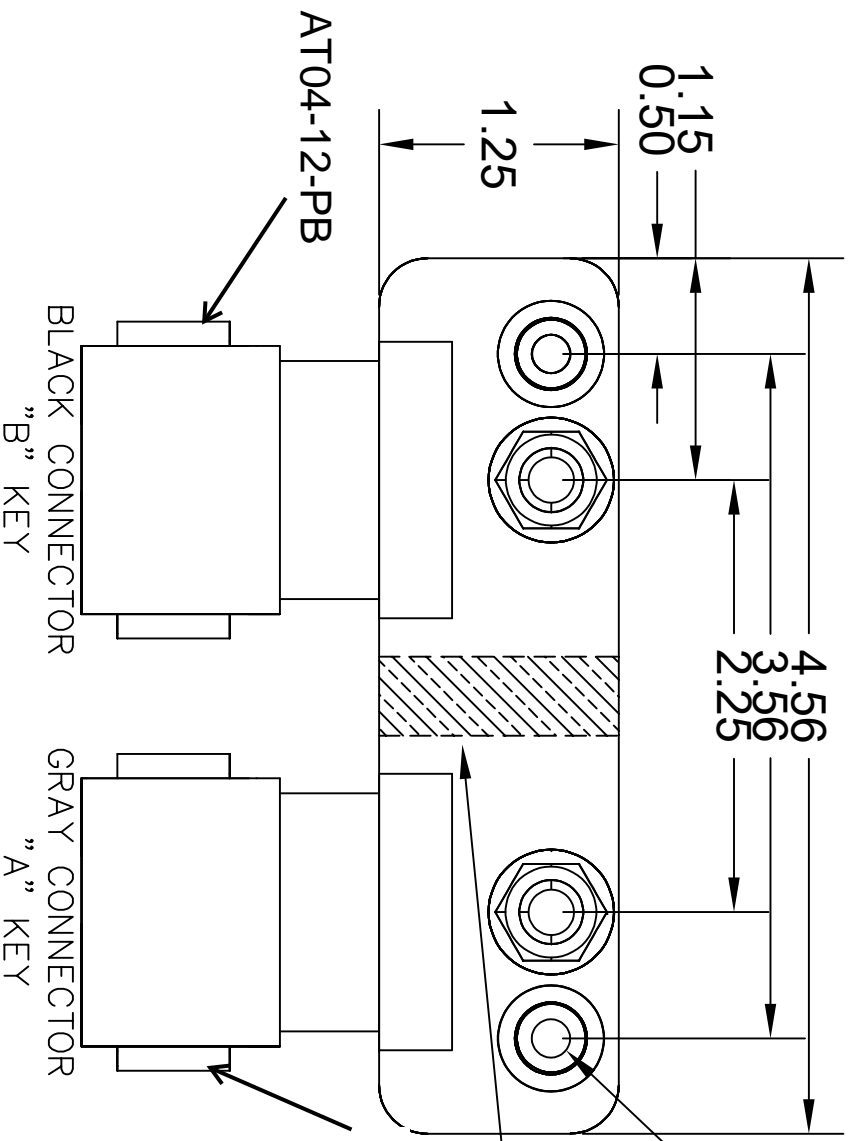
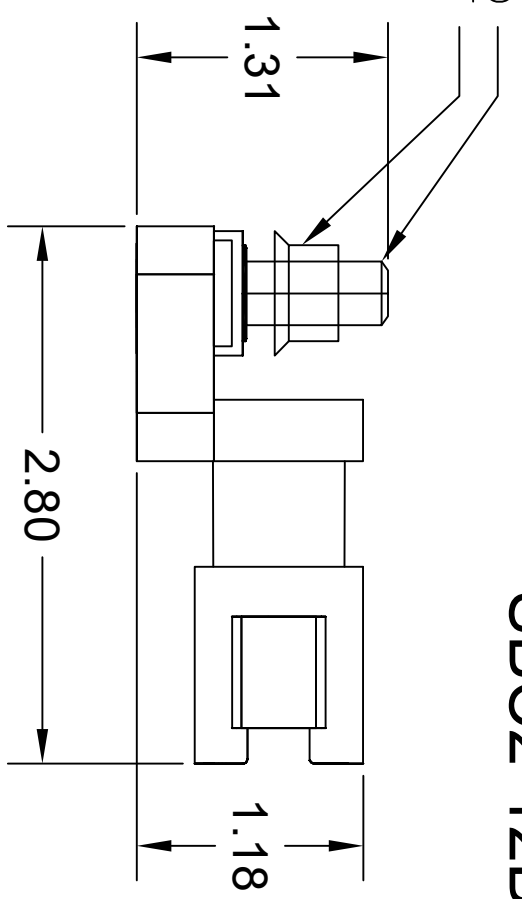


DESCRIPTION	REVISIONS	DATE
Release		21 Mar 2022

5/16-18 x 1" SS STUD
5/16-18 SERATED FLANGE NUT

SBC2-12B



MOUNTING HOLE FOR #10 PAN HEAD

INTERNALLY ISOLATED

RATINGS: 150A @ 48V DC PER HALF, 13A PER CONTACT

STUD: 2 @ 5/16-18 STAINLESS STEEL

CONNECTOR: SEALED TO IP67

IGNITION PROTECTED: SAE J1171

DEUTSCH MATING CONNECTOR 1: DT06-12SA

DEUTSCH MATING CONNECTOR 2: DT06-12SB

AMPHENOL MATING CONNECTOR 1: AT06-12SA

AMPHENOL MATING CONNECTOR 2: AT06-12SB

MOLEX MATING CONNECTOR 1: 93445-6212

MOLEX MATING CONNECTOR 2: 93445-6221

BUS MATERIAL: C1100 ELECTROLYTIC COPPER

BASE: REPTU - INJECTION MOLDED - BLACK



WWW.SEALEDBUSSBAR.COM

The best protection for your electrical connections

THIS DRAWING IS THE PROPERTY OF SORENSON LIGHTED CONTROLS, INC. A FLORIDA CORPORATION. ALL RIGHTS RESERVED. THIS DRAWING AND INFORMATION CONTAINED HEREIN MAY NOT BE COPIED OR DISCLOSED TO OTHERS WITHOUT THE WRITTEN PERMISSION OF SORENSON LIGHTED CONTROLS, INC.